

For Earth, For Life

Kubota

PRESS RELEASE BAUMA 2016

KUBOTA at Bauma 2016: 500 000 PRODUCED COMPACT EXCAVATORS

At the Bauma 2016 Kubota will celebrate the production of more than 500 000 mini excavators worldwide. Thus again the company has reached a major milestone in its history. Among experts Kubota is considered a pioneer in the history of mini and/or compact excavators. The fact that the first construction machinery was manufactured already in early the fifties proves the long tradition and experience Kubota has had in this field.

The KB60, the first mechanical excavator from Kubota, was built in early the fifties



As early as in 1974 Kubota started the production of compact excavators in Japan. Since then more than 500 000 excavators left the 4 global production plants located in Germany, Japan and China. This know-how and the experience of 42 years in the construction of compact, reliable and powerful machinery is combined in the current series of our 20 different models for the European market.

The first Kubota compact excavator model was the KH1 in 1974



Only recently the 500 000th KUBOTA mini-excavator was produced in Japan – an event that was celebrated.

At the Bauma 2016, too, Kubota would like to highlight this event. The complete range of Kubota construction equipment (compact excavators, zero-tail swing excavators, wheel loaders and track dumpers) for a variety of working assignments on building, garden or landscape sites will be presented at the trade fair in Munich.

Besides the equipment, Kubota will of course also show an extensive attachment with famous and well known European companies, the program for an efficient and compatible utilization of these machines, including various hydraulic quick-change systems.

From pioneer to market leader among compact excavators

500 000 compact excavators - a large number as well as a long way in the development and engineering of machines

The history of the Kubota compact excavator:

The development history of the Kubota machines, from the first model KH1 (launched in 1974) up to the current models of the KX-4 series.

Kubota hat bereits 1974 mit der Produktion von Baumaschinen begonnen. Das erste Modell war der KH-1. 1979 wurde das erste Export Modell ausgeliefert.



Comparing the first machines with the current models shows substantial differences in design and technology.



Model KH1 / 1974



Current model KX080-4 / 2016

500 000 x QUALITY AND PERFORMANCE – A BINDING TRADITION

The Kubota excavator models of the KX-4 series are one of the most advanced machines in their performance class among the compact equipment. These machines are our response to the challenges of the 21st century.

Since the first production of the Kubota compact excavator in 1974 our machines have been continuously advanced. They meet any operator requirement regarding a powerful, comfortable and safe working device. As manufacturer and market leader since April 1989 Kubota guarantees this with their production facility in Zweibrücken (Germany) and 42 years of know-how of the manufacture of compact construction machine equipment.

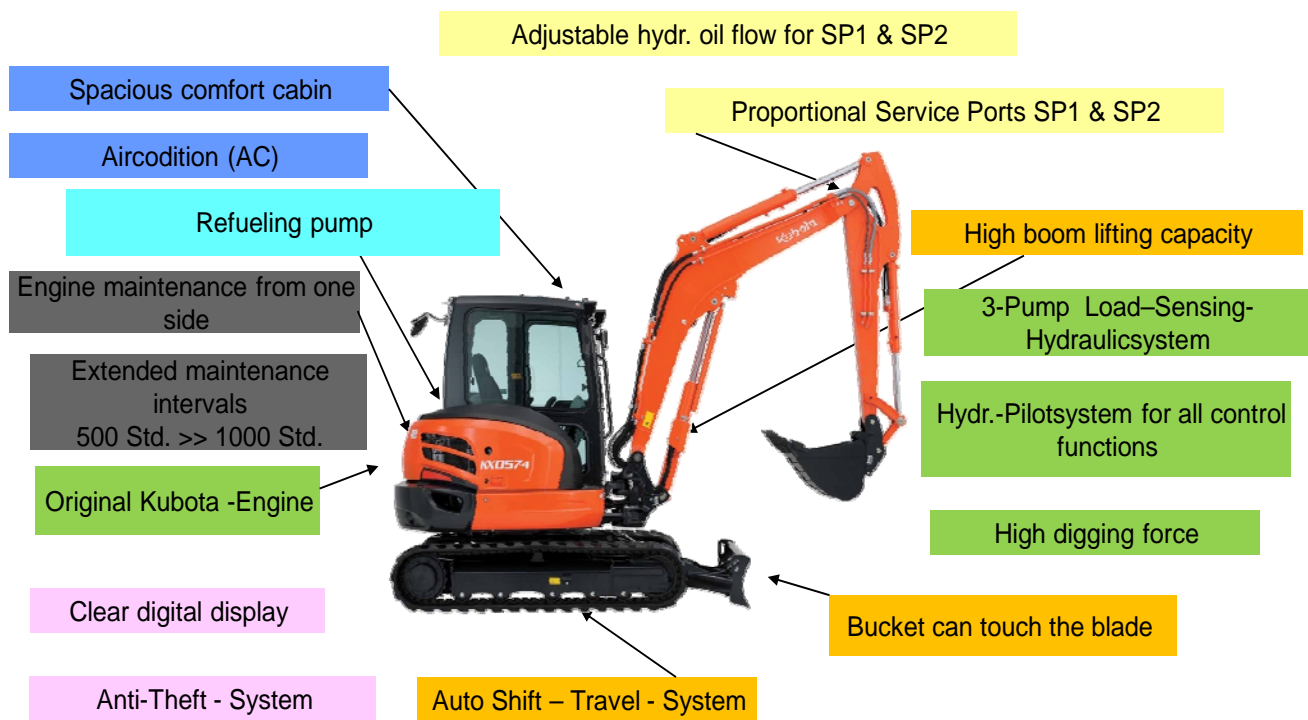
Today, the models of the KX-4 series include 9 different machines, conventional excavators KX015-4, KX016-4, KX018-4, KX019-4, KX057-4, KX080-4 and also the U27-4, U48-4 and U55-4, short rear-tail excavators with a very small tail overhang during the 90° rotation.

For Earth, For Life
Kubota

Technical – Features Compact Excavators KX-4 Series

For Earth, For Life
Kubota

Basic Data	Performance	Operator Comfort
Servicability	Visibility	Equipment



* **Note:** For example the equipment of Kubota KX057-4

Kubota compact excavators hold the ideal solution for every type of tough and heavy working task, no matter if it's a standard model or a zero-tail swing excavator.

The current scope includes 20 different basic models of compact excavators in weight classes ranging from 970 kg to 8.7 to, for almost any requirement the customer may have.

Production „Made in Germany“

The European production facility and development center in Zweibrücken (Germany) allows a very short reaction time to the various market trends and customer needs. Since its start of production in April 1989 more than 100 000 machines for the European market have already been manufactured at the Kubota compact-excavator plant in Zweibrücken.

Kubota Baumaschinen GmbH: mini excavators „Made in Germany“ Zweibrücken, Rheinland-Pfalz



KUBOTA CHRONOLOGY / PROFILE

Company Name: KUBOTA Corporation
Homepage: <http://www.kubota.co.jp>
Established: In February 1890 in Osaka / Japan
Headquarters: Osaka, Japan
Employees: 35.487 (as of 31.03.2015)
Corporate Form: Limited company, listed stocks in Tokyo, Osaka and New York
Sales: € 12.18 billion (fiscal year 2015)

Main business sectors

Foundry Products: Steel pipes, iron pipes, sewage pipes, castings
Equipment: Diesel engines, tractors, compact excavators, loaders, harvesters, seeders, generators
Environmental: Water treatment, recycling, water pumps, waste incinerators

<u>Company History:</u>	1890	Production of casting parts
	1922	First kerosene-powered engine
	1947	First agricultural machine
	1953	First construction machine
	1960	Start of tractor production
	1965	Start of rice harvester production
	1974	First mini excavator
	2002	20 million Kubota diesel engines
	2006	Production of 50.000st compact excavator "Made in Germany", Kubota construction machinery Zweibrücken,
	2013	100.000st excavator „Made in Germany“
	2014	4.4 million tractors sold
	2016	Over 500.000 produced excavators
	2016	Annual production capacity 49,700 compact excavators

Today Kubota has 31 different production facilities worldwide USA, Canada, China, Thailand, Vietnam, Indonesia, Frankreich, Norwegen, Saudi Arabia and Germany, incl.13 factories in Japan

For all international manufacturers the Bauma 2016 in Munich is the traditional platform to present new developments. Kubota will also use this opportunity to introduce a variety of innovations in the field of wheel loaders and compact excavators to the trade visitors.

We are exhibiting at Bauma, visit us on the open-air area **North: FN 1018 / 5**

Contact Address:

Kubota Baumaschinen GmbH
Geschäftsbereich Vertrieb Baumaschinen
Mr. Joachim Stein
Steinhauser Strasse 100
66482 Zweibrücken

Email address: Joachim.Stein@Kubota.com

For further information regarding the company, please visit our website: www.kubota-baumaschinen.de