

Engine output: **19.7 PS/14.5 kW** | Machine weight: **1,775 kg**

First in the industry



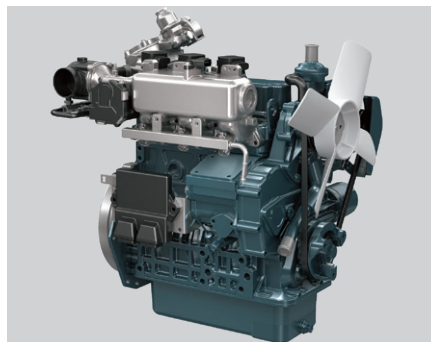
KUBOTA MINI EXCAVATOR KX019-4 LPG

IMPROVED EMISSIONS



Compared with diesel engines, thanks to its clean-burning propane engine, the Kubota Mini Excavator emits almost zero PM and reduces NOX and HC emissions to just 5% compared to a diesel engine.

CLEAN LPG ENGINE



Kubota's new propane engine has no DPF filter to clean and replace, no need for combustion regeneration, and lower noise levels. This will save you time and money while reducing machine downtime.

LPG TANK WITH HARD COVER



Depending on the working environment, one LPG tank can last an entire working day. Unlike diesel fuel, LPG can't spill and contaminate the surrounding environment. A hard cover protects the tank from direct sunlight and other objects.

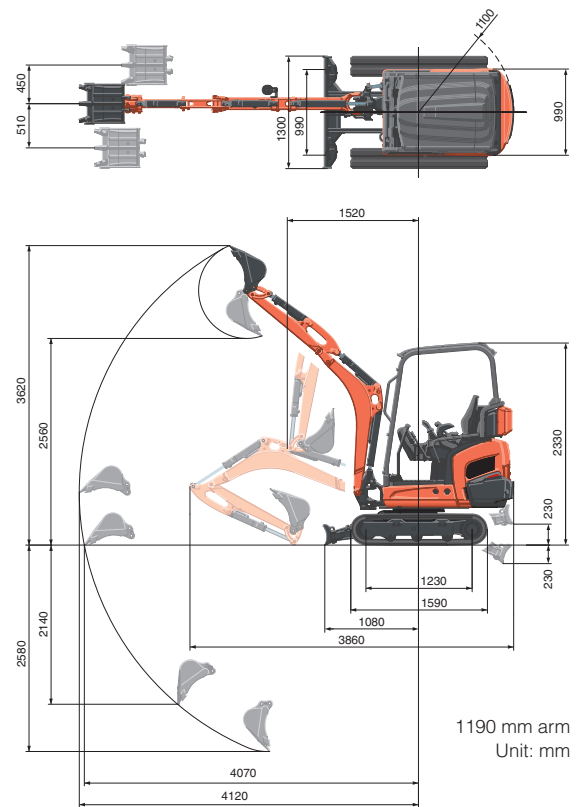
SPECIFICATIONS

Model	KX019-4 LPG	
Operating weight**1	kg	1850
Bucket capacity, std. SAE/CECE	m ³	0.04
Bucket width (without side teeth)	mm	470
Engine		
Manufacturer	KUBOTA	
Model	WG972-L-E4-BH-1	
Type	Water cooled, LPG engine	
Output (Net) ISO 14396	kW/rpm	14.5 / 2200
	PS/rpm	19.7 / 2200
Number of cylinder	3	
Bore x Stroke	mm	74.5 x 73.6
Displacement	cc	962
Dimensions		
Overall length	mm	3860
Overall height	mm	2330
Swivelling speed	rpm	9.1
Rubber shoe width	mm	230
Tumbler distance	mm	1230
Dozer size (width x height)	mm	990 / 1300 x 230
Hydraulic pumps		
P1, P2	Variable displacement pump	
Flow rate	ℓ/min	17.3
Hydraulic pressure	MPa (kgf/cm ²)	21.6 (220)
P3	Gear pump	
Flow rate	ℓ/min	10.4
Hydraulic pressure	MPa (kgf/cm ²)	20.6 (210)
Max. digging force (arm / bucket)	kN	7.8 / 15.9
Boom swing angle (left / right)	deg	75 / 60
Auxiliary circuit		
Flow rate	ℓ/min	27.7
Hydraulic pressure	MPa (kgf/cm ²)	21.6 (220)
Hydraulic reservoir		
	ℓ	28
Max. travelling speed (low / high)	km/h	2.2 / 4.0
Ground contact pressure	kPa (kgf/cm ²)	27.4 (0.28)
Ground clearance	mm	160
Noise level		
LpA / LwA (2000/14/EC)	dB (A)	77 / 91
Vibration**2		
Hand arm system (ISO 5349-2:2001)		
Digging / Levelling	m/s ² RMS	<2.5 / <2.5
Driving / Idling	m/s ² RMS	3.83 / <2.5
Whole body (ISO 2631-1:1997)		
Digging / Levelling	m/s ² RMS	<0.5 / <0.5
Driving / Idling	m/s ² RMS	0.56 / <0.5

*1 With 35 kg standard bucket ready for operation. Machine weight includes 75 kg operator.

*2 These values are measured under specific conditions at maximum engine speed and can deviate, depending on the operating status.

WORKING RANGE

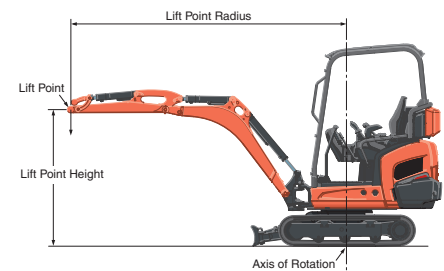


LIFTING CAPACITY

Lift Point Height	KX019-4 LPG					
	Lift point radius (2m)			Lift point radius (max.)		
	Over-front	Over-side	Over-side	Over-front	Over-side	Over-side
1.5m	2.4 (0.24)	2.4 (0.24)	2.4 (0.24)	-	-	-
1.0m	4.3 (0.44)	4.3 (0.44)	4.3 (0.44)	-	-	-
0.5m	5.7 (0.58)	4.8 (0.49)	4.9 (0.50)	2.6 (0.26)	2.1 (0.22)	2.2 (0.22)
0m	5.9 (0.61)	4.7 (0.48)	4.8 (0.49)	-	-	-

* Working ranges are with Kubota standard bucket, without quick coupler.

* Specifications are subject to change without notice for purpose of improvement.



KUBOTA EUROPE S.A.S.

19, rue Jules Vercurysse
Zone Industrielle - CS50088
95101 Argenteuil Cedex France
Téléphone : (33) 01 34 26 34 34
Télécopieur : (33) 01 34 26 34 99

KUBOTA (U.K.) LTD

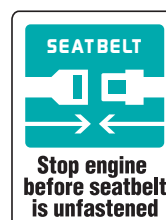
Dormer Road, Thame,
Oxfordshire,
OX9 3UN, U.K.
Phone : (44) 01844-268140
F a x : (44) 01844-216685

KUBOTA Baumaschinen GmbH

Steinhauser Straße 100
66482 Zweibrücken Deutschland
Telefon : (49) 0 63 32 - 487 - 0
F a x : (49) 0 63 32 - 487 - 101



<https://www.kubota-eu.com>



Kubota Genuine and Approved Parts

for maximum performance, durability and safety

